

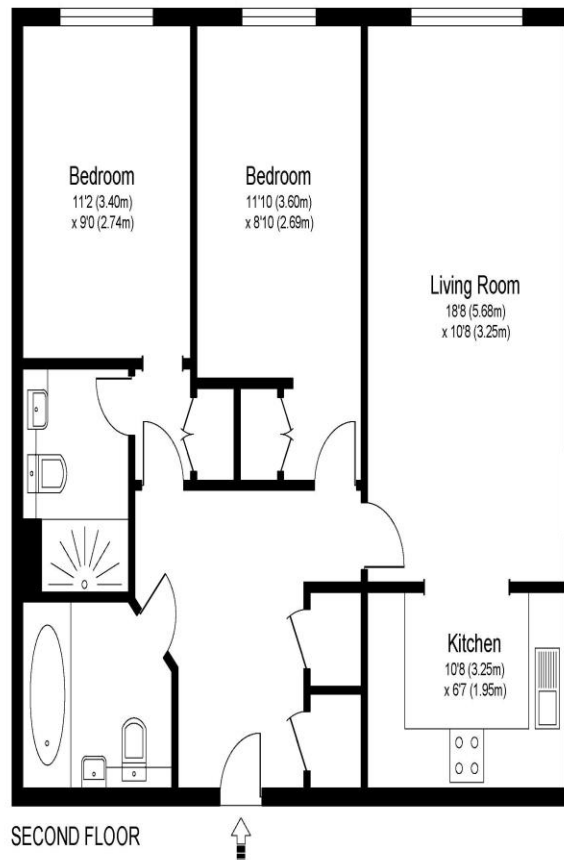


10 Consero Court Brooklands Road Weybridge Surrey KT13 0RU

£1,850 pcm + Initial deposit



CONSERO COURT KT13



Approximate Gross Internal Floor Area: 67 m sq / 719 sq ft

Whilst every attempt has been made to ensure the accuracy of the floor plan contained here, measurements of doors, windows and rooms are approximate and no responsibility is taken for any error, omission or misstatements. These plans are not to scale and are for representation purposes only as defined by RICS Code of Measuring Practice and should be used as such by any prospective purchaser. Specifically no guarantee is given on total square footage of the property if quoted on this plan. Any figure given is for initial guidance only and should not be relied on as a basis of valuation.

A modern two-bedroom, two-bathroom luxury apartment ideally situated in Weybridge. Internally the property is superbly presented and has a beautiful modern finish throughout. Both bedrooms are doubles and both have built-in wardrobes, with the master bedroom benefitting from an en-suite shower room. The main living area is open-plan with the kitchen and is perfect for socialising and entertaining. The block itself is secure and has gated parking and benefits from an allocated space. Whilst located on the outskirts of Weybridge we feel this is an excellent location for the train station, the A3, M25, David Lloyd gym and Brooklands retail and business park which includes both Tesco and Marks & Spencer.

Offered part furnished. EPC Rating B.

Available 4th April 2026.



AGENTS NOTES: These details do not constitute any part of an offer or contract. In issuing them we do not have any authority to give any warranty or representation whatsoever in respect of this property. These details are provided without any responsibility on our part or the part of the vendors. No statements in these details are to be relied upon as representations of fact and purchasers should satisfy themselves by inspection or otherwise as to the accuracy of the statements contained therein.

Equipment: We have not tested the equipment or central heating system mentioned in these particulars and purchasers are advised to satisfy themselves as to their working order and condition.

Measurements: Great care is taken when measuring but measurements should not be relied upon for ordering carpets, equipment, etc.